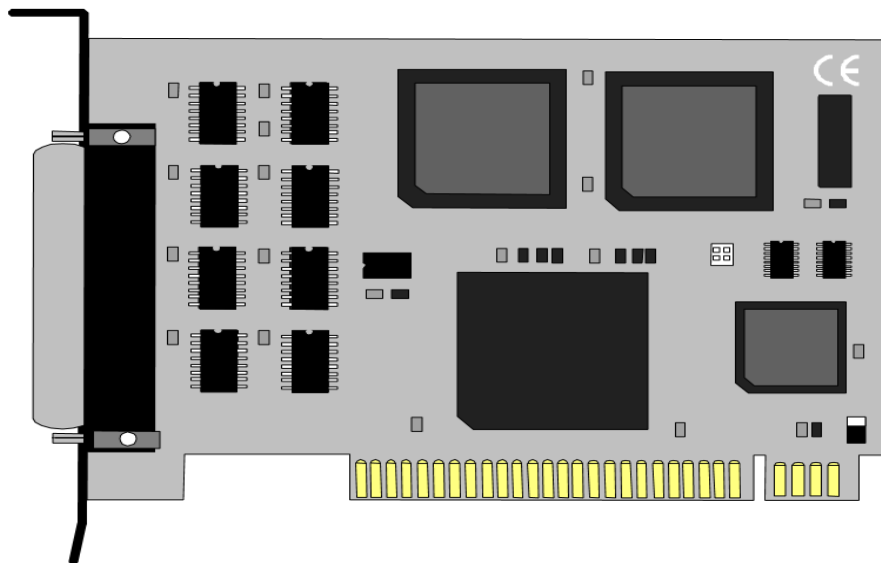


# ACB-IV

User Manual | 4011



SEALEVEL®

# Contents

- CONTENTS ..... 2
- INTRODUCTION ..... 3
- BEFORE YOU GET STARTED ..... 4
- CARD SETUP ..... 6
- INSTALLATION ..... 12
- TECHNICAL DESCRIPTION ..... 14
- SPECIFICATIONS ..... 17
- APPENDIX A – TROUBLESHOOTING ..... 18
- APPENDIX B – HOW TO GET ASSISTANCE ..... 19
- APPENDIX C – ELECTRICAL INTERFACE ..... 20
- APPENDIX D – DIRECT MEMORY ACCESS ..... 21
- APPENDIX E – ASYNCHRONOUS AND SYNCHRONOUS COMMUNICATIONS ..... 22
- APPENDIX F – ACB DEVELOPER TOOLKIT AND ACB RESOURCE KIT ..... 24
- APPENDIX G – SILK SCREEN ..... 25
- APPENDIX H – COMPLIANCE NOTICES ..... 26
- WARRANTY ..... 27

# Introduction

## Overview

The Sealevel Systems **ACB-IV** provides the PC with two high speed RS-530/422/485 sync/async ports. The **ACB-IV** can be used in a variety of sophisticated communications applications such as SDLC, HDLC, X.25, and high speed async.

# Before You Get Started

## What's Included

The **ACB-IV** is shipped with the following items. If any of these items are missing or damaged, contact the supplier.

- **ACB-IV Serial Interface Adapter**
- **Channel B Interface Cable**

## Advisory Conventions



### **Warning**

The highest level of importance used to stress a condition where damage could result to the product, or the user could suffer serious injury.



### **Important**

The middle level of importance used to highlight information that might not seem obvious or a situation that could cause the product to fail.



### **Note**

The lowest level of importance used to provide background information, additional tips, or other non-critical facts that will not affect the use of the product.

## Before We Get Started, Continued

### Factory Default Settings

The **ACB-IV** factory default settings are as follows:

Base Address	DMA Channels	IRQ	Electrical Specification
238	TX: 1/RX: 3	5	RS-530/422

To install the ACB-IV using factory default settings, refer to the section on Installation.

For your reference, record installed ACB-IV settings below:

# Card Setup

The **ACB-IV** contains several jumper straps which must be set for proper operation.

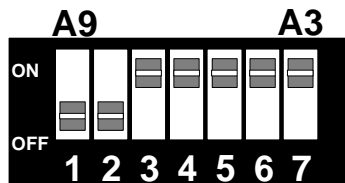
## Address Selection

The **ACB-IV** occupies 8 consecutive I/O locations. A DIP-switch (SW1) is used to set the base address for these locations. The **ACB-IV** can reside in any I/O location between 100 and 3F8 Hex. Be careful when selecting the base address as some selections conflict with existing PC ports. The following table shows several examples that usually do not cause a conflict.

Address	Binary	Switch Settings						
		1	2	3	4	5	6	7
238-23F	1000111XXX	Off	On	On	On	Off	Off	Off
280-287	1010000XXX	Off	On	Off	On	On	On	On
2A0-2A7	1010100XXX	Off	On	Off	On	Off	On	On
2E8-2EF	1011101XXX	Off	On	Off	Off	Off	On	Off
300-307	1100000XXX	Off	Off	On	On	On	On	On
328-32F	1100101XXX	Off	Off	On	On	Off	On	Off
3E8-3EF	1111101XXX	Off	Off	Off	Off	Off	On	Off

**Figure 1 - Address Selection Table**

The following illustration shows the correlation between the DIP-switch setting and the address bits used to determine the base address. In the example below, the address 300 Hex through 307 Hex is selected. 300 Hex = 11 0000 0XXX in binary representation.



**Figure 2 - DIP - switch Illustration**



Setting the switch 'On' or 'Closed' corresponds to a '0' in the address, while leaving it 'Off' or 'Open' corresponds to a '1'.

## Card Setup, Continued

The relative I/O address of the 8530 SCC registers is as follows:

Base+0 Channel A Data Port

Base+1 Channel A Control Port Base+2 Channel B Data Port

Base+3 Channel B Control Port

(Base+4) Board Control/Status Port

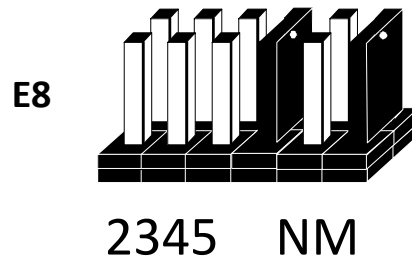
Where 'Base' is the selected board base address.

### IRQ Selection (Header E8)

The **ACB-IV** has an interrupt selection jumper which should be set prior to use if an interrupt is required by your application software. Consult the user manual for the application software being used to determine the proper setting.

Positions '**M**' & '**N**' allow the user to select a single interrupt per port mode or a shared interrupt mode. The '**N**' selects the single interrupt per port mode. The '**M**' selects the shared interrupt mode, which allows more than one port to access a single IRQ and indicates the inclusion of a 1K ohm pull-down resistor required on one port when sharing interrupts.

The diagram below shows IRQ 5 selected in a shared configuration. If no interrupt is desired, remove both jumpers.



2/9	Selects IRQ2/9
3	Selects IRQ3
4	Selects IRQ4
5	Selects IRQ5
N	Selects Normal IRQ Mode
M	Selects 'Multi-IRQ' (Shared) IRQ Mode

**Figure 3 - Header E8, IRQ Selection**

## Card Setup, Continued

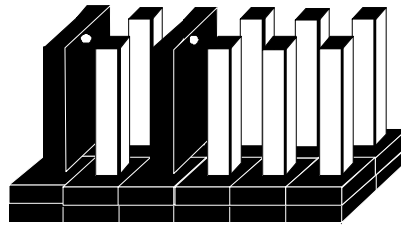
### DMA Options

Headers E3 and E5 select the **Direct Memory Access (DMA)** mode of operation for the **ACB-IV**. Channel A of the SCC can operate in either half-duplex or full duplex DMA mode. Full duplex DMA can transmit and receive data simultaneously. Half-duplex DMA can transmit or receive data, but not in both directions simultaneously. Refer to Page 10 (Figure 6) for the most common DMA settings.



If DMA is not used, remove all of the jumpers on E3 and E5.

#### Header E3



1 23456

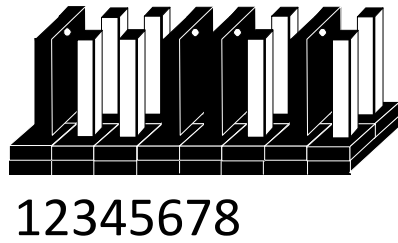
1	DACK 1 Or 3 Acknowledge For Two Channel Mode
2	Two Channel A/B Mode A3B1
3	Two Channel A/B Mode A1B3
4	On = Ch. A Only / Off = Ch. B Only
5	DACK 3 DMA Acknowledge Channel 3
6	DACK 1 DMA Acknowledge Channel 1

**Figure 4 - Header E3**



## Card Setup, Continued

### Header E5



1	SCC Channel A or B can use DMA Channel 3
2	SCC Channel A only can use DMA Channel 3
3	SCC Channel A or B can use DMA Channel 1
4	SCC Channel A only can use DMA Channel 1
5	SCC Channel B Enable for Half Duplex DMA Transfers
6	SCC Channel A, DMA Channel 1 & 3 for Full Duplex Transfers
7	DMA Tri-State drivers permanently enabled
8	DMA Tri-State drivers enabled by status / control port bit 7

**Figure 5 - Header E5**

Positions 7 and 8 of Header E5 enable or disable DMA operation. A jumper 'ON' position 7 permanently enables the DMA tri-state drivers. A jumper 'ON' position 8 places DMA under software control via the DMA enable control port bit (located at Base+4). **Removing the jumper disables the drivers, and no DMA can be performed.**



The power-on reset signal disables the DMA enable signal. A jumper placed in position 7 of E5 will override any software use of the DMA enable/disable status port bit.

## Card Setup, Continued

### Commonly Used DMA Jumper Options

Option	E4	E5	Program 8530
<b>No DMA</b>	None	None	N/A

<b>Single Channel DMA (Half-Duplex Only):</b>			
Ch. A DMA Ch.1 Half Duplex Ch. B No DMA	4,6	4,5	WAIT/REQ A
Ch. A DMA Ch.3 Half Duplex Ch. B No DMA	4,5	2,5	WAIT/REQ A
Ch. B DMA Ch.1 Half Duplex Ch. A No DMA	6	3,5	WAIT/REQ B
Ch. B DMA Ch.3 Half Duplex Ch. A No DMA	5	1,5	WAIT/REQ B

<b>Full Duplex using Both DMA Channels 1 and 3:</b>			
Ch.A DMA Ch.1 Receive Data Ch.A DMA Ch.3 Transmit Data	1,4	1,4,6	WAIT/REQ A DTR/REQ A
Ch.A DMA Ch.3 Receive Data Ch.A DMA Ch.1 Transmit Data	1,4	2,3,6	WAIT/REQ A DTR/REQ A

<b>Full Duplex using Both DMA Channels 1 and 3:</b>			
Ch.A DMA Ch.1 Receive Data Ch.A DMA Ch.3 Transmit Data	1,4	1,4,6	WAIT/REQ A DTR/REQ A
Ch.A DMA Ch.3 Receive Data Ch.A DMA Ch.1 Transmit Data	1,4	2,3,6	WAIT/REQ A DTR/REQ A

**Figure 6 - Commonly Used DMA Options**

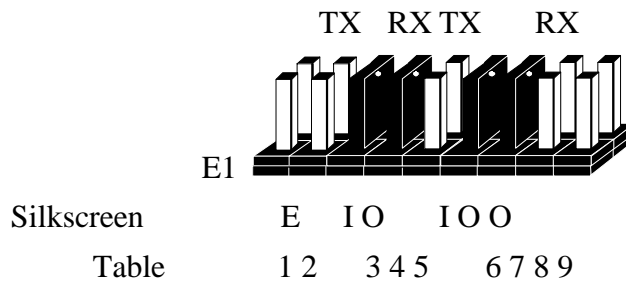


Remember that E5 positions 7 and 8 enable or disable DMA operation.

## Card Setup, Continued

### Headers E3 and E6

Headers E3 and E6 set the input/output clock modes for the transmit clock (TXC), as well as the RS-485 enable/disable. E1 sets the clock mode for the SCC Channel B (Port 2), while E2 sets the clock mode for the SCC channel A (Port 1).



1	Enable (for RS-485 mode only)
2	Transmit Clock Input (TXC In on pins 12 and 15 of the DB-25)
3*	Transmit Clock Output (TXC Out on pins 12 and 15 of the DB-25)
4*	Receive Clock Input (RXC In on pins 17 and 9)**
5	Not Used (Leave Jumper Off)
6*	Transmit Clock Output (TXC Out on pins 12 and 15 of the DB-25)
7*	Transmit Clock Output (TXC Out on pins 12 and 15 of the DB-25)
8	Not Used (Leave Jumper Off)**
9	Not Used (Leave Jumper Off)**

**Figure 7 - Headers E1 and E2 Clock Input/Output Modes**



\*Factory default

\*\*These jumpers are always configured in this manner and should not be removed or replaced.



The TXC pins (12 and 15) can be programmed as either an input or an output. The TSET pins (11 and 24) will always echo the TXC pins, regardless of whether the TXC pins are selected as an input or an output.

### RS-485 Enable

To enable the driver in RS-485 mode, place a jumper over position 1 on E1 for port 2 and position 1 on E2 for port 1, then assert RTS (Write Register 5 position D1=1) to transmit and de-assert RTS (Write Register 5 position D1=0) when finished transmitting. To permanently enable the driver (normal EIA-530/RS-422 point to point mode), remove jumper at position 1 on E1 and E2. Half-duplex two-wire operation is also possible by connecting TX+ to RX+ and TX- to RX- in the cable hood. The unused EIA-530 signals can be left disconnected or floating, as they have pull-up/pull-down resistors to provide an 'On' condition, if not connected.

# Installation

## Hardware Installation

The **ACB-IV** can be installed in any of the PC expansion slots. The **ACB-IV** contains several jumper straps for each port which must be set for proper operation.



Do not install the Adapter in the machine until the software has been fully installed.

1. Turn off PC power. Disconnect the power cord.
2. Remove the PC case cover.
3. Locate two available slots and remove the blank metal slot covers.
4. Install the Channel B cable into Box Header E4. This cable is keyed to prevent improper installation. Gently insert the **ACB-IV** into the slot. Make sure that the adapter is seated properly. Attach the Channel B cable to the adjacent slot with the retaining screw. (If Channel B of the ACB-IV is not used, the adapter cable is not required).
5. Replace the cover.
6. Connect the power cord.

Installation is complete.

## Cabling Options

The **ACB-IV** has a number of cabling options available. These options include:

- **CA-104** - This cable provides a 6' extension for use with RS-530/422
- **CA-107** - This cable provides a simple interface to the older RS-449, DB-37 type connector. RS-530 was designed as a replacement for RS-449.

# Installation, Continued

## Software Installation

### For Windows Users



Do not install the Adapter in the machine until the software had been fully installed.

The SeaMAC software for the ACB-IV is available upon request. For additional software support, please call Sealevel Systems' Technical Support, (864) 843-4343. Our technical support is free and available from 8:00AM-5:00PM Eastern Time, Monday through Friday. For email support contact: [support@sealevel.com](mailto:support@sealevel.com).

# Technical Description

The **ACB-IV** utilizes the Zilog 8530 **S**erial **C**ommunications **C**ontroller (SCC). This chip features programmable baud rate, data format and interrupt control, as well as DMA control. Refer to the SCC User's Manual for details on programming the SCC 8530 chip.

## Features

- Two channels of sync/async communications using 8530 chip
- DMA supports data rate greater than 1 million bps (bits per second)
- Select-able Port Address, IRQ level (2/9,3,4,5), and DMA channel
- (1 or 3)
- EIA-530/422 interface with full modem control supports TD, RD, RTS, CTS, DSR, DCD, DTR, TXC, RXC, LL, RL, TM signals
- Jumper options for clock source
- Software programmable baud rate
- High Speed Enhanced Serial Communications Controller
- (85C30,85230) compatible

## Internal Baud Rate Generator

The baud rate of the SCC is programmed under software control. The standard oscillator supplied with the board is 7.3728 MHz. However, other oscillator values can be substituted to achieve different baud rates.

## Programming the ACB-III

### Control/Status Port

The **ACB-IV** occupies eight Input/Output (I/O) addresses. The first four are used by the SCC chip, while the fifth address (Base+4) is the address of the on-board **Control/Status Port**. This port is used to set the **Data Terminal Ready (DTR)** signal, to enable or disable DMA under program control, and to monitor the **Data Set Ready (DSR)** input signals from the modem. The following table lists bit positions of the Control/Status port.

Bit	Output Port Bits		Input Port Bits	
0	DTR A	1=On, 0=Off	DSR A	1=On, 0=Off
1	DTR B	1=On, 0=Off	DSR B	1=On, 0=Off
2-6	Not Used		Not Used	
7	DMA Enable	1=On, 0=Off	Not Used	

**Figure 8 – Control/Status Register Bit Definitions**

## Technical Description, Continued

### Software Examples

Function	Program Bits
Turn On CH. A DTR	Out (Base+4),XXXX XXX1
Turn On CH. B DTR	Out (Base+4),XXXX XX1X
Turn Off CH. A DTR	Out (Base+4),XXXX XXX0
Turn Off CH. B DTR	Out (Base+4),XXXX XX0X
Turn On CH. A LL	Out (Base+4),XXXX X1XX
Turn On CH. B LL	Out (Base+4),XXX1 XXXX
Turn On CH. A RL	Out (Base+4),XXXX 1XXX
Turn On CH. B RL	Out (Base+4),XX1X XXXX
Turn Off CH. A LL	Out (Base+4),XXXX X0XX
Turn Off CH. B RL	Out (Base+4),XX0X XXXX
Enable DMA Drivers	Out (Base+4),1XXX XXXX
Disable DMA Drivers	Out (Base+4),0XXX XXXX
Test CH. A DSR	In (Base+4), Mask=0000 0001
Test CH. B DSR	In (Base+4), Mask=0000 0010
Test CH. A TM	In (Base+4), Mask=0000 0100
Test CH. B TM	In (Base+4), Mask=0001 0000

**Figure 9 – Control/Status Register Examples**

## Technical Description, Continued

### Connector P1 and P2 Pin Assignments

Signal		Name	Pin #	Mode
GND		Ground	7	
RDB	RX+	Receive Positive	16	Input
RDA	RX-	Receive Negative	3	Input
CTSB	CTS+	Clear To Send Positive	13	Input
CTSA	CTS-	Clear To Send Negative	5	Input
DSRB	DSR+	Data Set Ready Positive	22	Input
DSRA	DSR-	Data Set Ready Negative	6	Input
DCDB	DCD+	Data Carrier Detect Positive	10	Input
DCDA	DCD	Data Carrier Detect Negative	8	Input
TDB	TX+	Transmit Positive	14	Output
TDA	TX-	Transmit Negative	2	Output
RTSB	RTS+	Request To Send Positive	19	Output
RTSA	RTS-	Request To Send Negative	4	Output
DTRB	DTR+	Data Terminal Ready Positive	23	Output
DTRA	DTR-	Data Terminal Ready Negative	20	Output
TXCB	TXC+	Transmit Clock Positive	12	Input
TXCA	TXC-	Transmit Clock Negative	15	Input
RXCB	RXC+	Receive Clock Positive	9	Input
RXCA	RXC-	Receive Clock Negative	17	Input
TSETB	TSET+	Terminal Timing Positive	11	Output
TSETA	TSET-	Terminal Timing Negative	24	Output
LL		Local Loop-Back	18	Output
RL		Remote Loop-Back	21	Output
TM		Test Mode	25	Input

### RS-530/422/485 Line Termination

Typically, each end of the RS-530/422/485 bus must have line terminating resistors. A 100 ohm resistor is across each RS-530/422/485 input in addition to a 1K ohm pull-up/pull-down combination that bias the receiver inputs.

The RS-530 specification calls for a 100 ohm 1/2 watt resistor between the signal ground and the chassis ground. On the IBM PC, these two grounds are already connected together, therefore this resistor is omitted.



# Specifications

## Environmental Specifications

Specification	Operating	Storage
Temperature Range	0° to 50° C (32° to 122° F)	-20° to 70° C (-4° to 158° F)
Humidity Range	10 to 90% R.H. Non-Condensing	10 to 90% R.H. Non-Condensing

## Manufacturing

All Sealevel Systems Printed Circuit boards are built to UL 94V0 rating and are 100% electrically tested. These printed circuit boards are solder mask over bare copper or solder mask over tin nickel.

## Power Consumption

Supply line	+5 VDC
Rating	195 mA

## Mean Time Between Failures (MTBF)

Greater than 150,000 hours. (Calculated)

## Physical Dimensions

Board length	6.2 inches (15.75 cm)
Board Height including Goldfingers	4.2 inches (10.66 cm)
Board Height Excluding Goldfingers	3.9 inches (9.91 cm)



Please see Appendix G for board layout and dimensions.

## Appendix A – Troubleshooting

Sealevel Systems has a ACB Developers Toolkit ([See Appendix F](#)) available at your request. The toolkit can be used in the troubleshooting procedures. Please contact Technical Support as instructed below for more information. The following simple steps below should eliminate most common problems.

1. Identify all I/O adapters currently installed in your system. This includes your on-board serial ports, controller cards, sound cards etc. The I/O addresses used by these adapters, as well as the IRQ (if any) should be identified.
2. Configure your Sealevel Systems adapter so that there is no conflict with currently installed adapters. No two adapters can occupy the same I/O address.
3. Make sure the Sealevel Systems adapter is using a unique IRQ. While the Sealevel Systems adapter does allow the sharing of IRQ's, many other adapters (i.e., SCSI adapters & on-board serial ports) do not. The IRQ is typically selected via an on-board header block. Refer to the section on Card Setup for help in choosing an I/O address and IRQ.
4. Make sure the Sealevel Systems adapter is securely installed in a motherboard slot.
5. Use the User Manual to verify that the Sealevel Systems adapter is configured correctly.
6. The following are known I/O conflicts:
  - 3F8-3FF is typically reserved for COM1:
  - 2F8-2FF is typically reserved for COM2:
  - 3E8-3EF is typically reserved for COM3:
  - 2E8-2EF is typically reserved for COM4:. This is a valid setup option for the **ACB IV**. However, since only 10 address lines are actually decoded, a possible conflict with an advanced video card emulating the IBM XGA adapter (8514 register set) may occur.

For additional information to request the ACB Developer Toolkit software discussed in [Appendix F](#) or if these steps do not solve your problem, please call Sealevel Systems' Technical Support, (864) 843-4343. Our technical support is free and available from 8:00AM-5:00PM Eastern Time, Monday through Friday. For email support contact: [support@sealevel.com](mailto:support@sealevel.com).

## Appendix B – How To Get Assistance

Please refer to: Appendix A – Troubleshooting Guide prior to calling Technical Support.

Begin by reading through the Trouble Shooting Guide in Appendix A. If assistance is still needed, please see below.

When calling for technical assistance, please have your user manual and current adapter settings. If possible, please have the adapter installed in a computer ready to run diagnostics.

Sealevel Systems provides an FAQ section on its web site. Please refer to this to answer many common questions. This section can be found at <http://www.sealevel.com/faq.asp>.

Sealevel Systems maintains a web page on the Internet. Our home page address is [www.sealevel.com](http://www.sealevel.com). The latest software updates, and newest manuals are available via our web site.

Technical support is available Monday to Friday from 8:00 a.m. to 5:00 p.m. eastern time. Technical support can be reached at (864) 843-4343.

**RETURN AUTHORIZATION MUST BE OBTAINED FROM SEALEVEL SYSTEMS BEFORE RETURNED MERCHANDISE WILL BE ACCEPTED. AUTHORIZATION CAN BE OBTAINED BY CALLING SEALEVEL SYSTEMS AND REQUESTING A RETURN MERCHANDISE AUTHORIZATION (RMA) NUMBER.**

# Appendix C – Electrical Interface

## RS-422

The RS-422 specification defines the electrical characteristics of balanced voltage digital interface circuits. RS-422 is a differential interface that defines voltage levels and driver/receiver electrical specifications. On a differential interface, logic levels are defined by the difference in voltage between a pair of outputs or inputs. In contrast, a single ended interface, for example RS-232, defines the logic levels as the difference in voltage between a single signal and a common ground connection. Differential interfaces are typically more immune to noise or voltage spikes that may occur on the communication lines. Differential interfaces also have greater drive capabilities that allow for longer cable lengths. RS-422 is rated up to 10 Megabits per second and can have cabling 4000 feet long. RS-422 also defines driver and receiver electrical characteristics that will allow 1 driver and up to 32 receivers on the line at once. RS-422 signal levels range from 0 to +5 volts. RS-422 does not define a physical connector.

## RS-530

RS-530 (a.k.a. EIA-530) compatibility means that RS-422 signal levels are met, and the pin-out for the DB-25 connector is specified. The Electronic Industry Association (EIA) created the RS-530 specification to detail the pin-out and define a full set of modem control signals that can be used for regulating flow control and line status. The RS-530 specification defines two types of interface circuits, Data Terminal Equipment (DTE) and Data Circuit-Terminating Equipment (DCE). The Sealevel Systems adapter is a DTE interface.

## RS-449

RS-449 (a.k.a. EIA-449) compatibility means that RS-422 signal levels are met, and the pin-out for the DB-25 connector is specified. The EIA created the RS-449 specification to detail the pin-out and define a full set of modem control signals that can be used for regulating flow control and line status.

## RS-485

RS-485 is backwardly compatible with RS-422; however, it is optimized for party line or multi-drop applications. The output of the RS-422/485 driver is capable of being Active (enabled) or Tri-State (disabled). This capability allows multiple ports to be connected in a multi-drop bus and selectively polled. RS-485 allows cable lengths up to 4000 feet and data rates up to 10 Megabits per second. The signal levels for RS-485 are the same as those defined by RS-422. RS-485 has electrical characteristics that allow for 32 drivers and 32 receivers to be connected to one line. This interface is ideal for multi-drop or network environments. RS-485 tri-state driver (not dual-state) will allow the electrical presence of the driver to be removed from the line. The driver is in a tri-state or high impedance condition when this occurs. Only one driver may be active at a time and the other driver(s) must be tri-stated. The output modem control signal Request to Send (RTS) controls the state of the driver. Some communication software packages refer to RS-485 as RTS enable or RTS block mode transfer. RS-485 can be cabled in two ways, two wire and four wire mode. Two wire mode does not allow for full duplex communication and requires that data be transferred in only one direction at a time. For half-duplex operation, the two transmit pins should be connected to the two receive pins (Tx+ to Rx+ and Tx- to Rx-). Four wire mode allows full duplex data transfers. RS-485 does not define a connector pin-out or a set of modem control signals. RS-485 does not define a physical connector.

## Appendix D – Direct Memory Access

In many instances it is necessary to transmit and receive data at greater rates than would be possible with simple port I/O. In order to provide a means for higher rate data transfers, a special function called **Direct Memory Access (DMA)** was built into the original IBM PC. The DMA function allows the **ACB-IV** (or any other DMA compatible interface) to read or write data to or from memory without using the Microprocessor. This function was originally controlled by the Intel 8237 DMA controller chip but may now be a combined function of the peripheral support chip sets (i.e., Chips & Technology or Symphony chip sets).

During a DMA cycle, the DMA controller chip is driving the system bus in place of the Microprocessor providing address and control information. When an interface needs to use DMA, it activates a DMA request signal (DRQ) to the DMA controller, which in turn sends a DMA hold request to the Microprocessor. When the Microprocessor receives the hold request it will respond with an acknowledge to the DMA controller chip. The DMA controller chip then becomes the owner of the system bus providing the necessary control signals to complete a Memory to I/O or I/O to Memory transfer. When the data transfer is started, an acknowledge signal (DACK) is sent by the DMA controller chip to the **ACB-IV**. Once the data has been transferred to or from the **ACB-IV**, the DMA controller returns control to the Microprocessor.

To use DMA with the **ACB-IV** requires a thorough understanding of the PC DMA functions. The ACB Developers Toolkit demonstrates the setup and use of DMA with several source code and high level language demo programs. Please refer to the SCC User's Manual for more information.

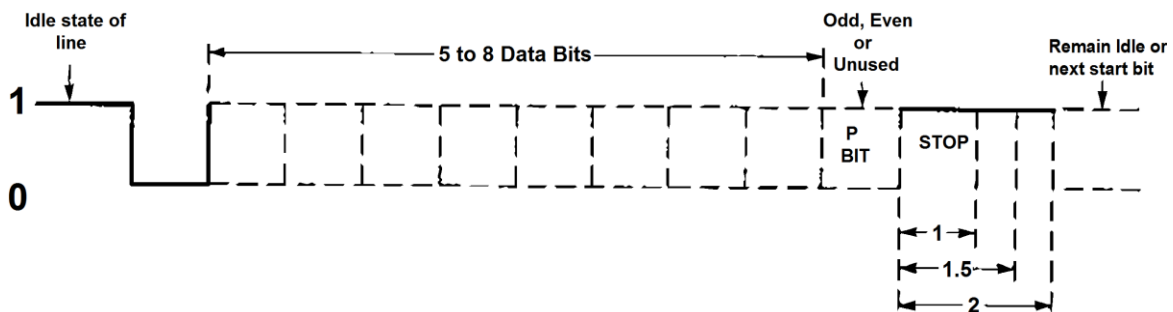
# Appendix E – Asynchronous and Synchronous Communications

Serial data communications implies that individual bits of a character are transmitted consecutively to a receiver that assembles the bits back into a character. Data rate, error checking, handshaking, and character framing (start/stop bits) are pre-defined and must correspond at both the transmitting and receiving ends. The techniques used for serial communications can be divided two groups, *asynchronous* and *synchronous*.

When contrasting asynchronous and synchronous serial communications, the fundamental differences deal with how each method defines the beginning and end of a character or group of characters. The method of determining the duration of each bit in the data stream is also an important difference between asynchronous and synchronous communications. The remainder of this section is devoted to detailing the differences between character framing and bit duration implemented in asynchronous and synchronous communications.

## Asynchronous Communications

Asynchronous communications is the standard means of serial data communication for PC compatibles and PS/2 computers. The original PC was equipped with a communication or COM: port that was designed around an 8250 Universal Asynchronous Receiver Transmitter (UART). This device allows asynchronous serial data to be transferred through a simple and straightforward programming interface. A start bit, followed by a pre-defined number of data bits (5, 6, 7, or 8) defines character boundaries for asynchronous communications. The end of the character is defined by the transmission of a pre-defined number of stop bits (usually 1, 1.5 or 2). An extra bit used for error detection is often appended before the stop bits.



**Figure 10 - Asynchronous Communications Bit Diagram**

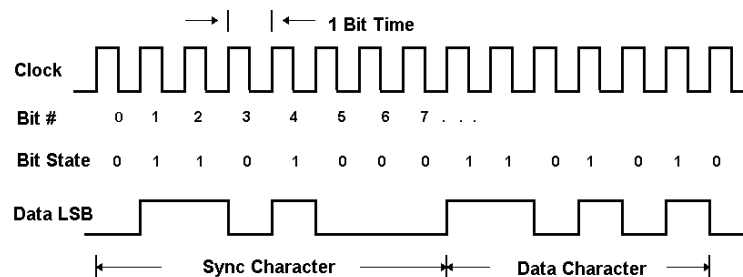
This special bit is called the parity bit. Parity is a simple method of determining if a data bit has been lost or corrupted during transmission. There are several methods for implementing a parity check to guard against data corruption. Common methods are called (E)ven Parity or (O)dd Parity. Sometimes parity is not used to detect errors on the data stream. This is referred to as (N)o parity. Because each bit in asynchronous communications is sent consecutively, it is easy to generalize asynchronous communications by stating that each character is wrapped (framed) by pre-defined bits to mark the beginning and end of the serial transmission of the character. The data rate and communication parameters for asynchronous communications have to be the same at both the transmitting and receiving

## Appendix E - Asynchronous and Synchronous Communications, Continued

ends. The communication parameters are baud rate, parity, number of data bits per character, and stop bits (i.e., 9600, N,8,1).

### Synchronous Communications

Synchronous Communications is used for applications that require higher data rates and greater error checking procedures. Character synchronization and bit duration are handled differently than asynchronous communications. Bit duration in synchronous communications is not necessarily pre-defined at both the transmitting and receiving ends. Typically, in addition to the data signal, a clock signal is provided. This clock signal will mark the beginning of a bit cell on a pre-defined transmission. The source of the clock is predetermined, and sometimes multiple clock signals are available. For example, if two nodes want to establish synchronous communications, point A could supply a clock to point B that would define all bit boundaries that A transmitted to B. Point B could also supply a clock to point A that would correspond to the data that A received from B. This example demonstrates how communications could take place between two nodes at completely different data rates. Character synchronization with synchronous communications is also very different than the asynchronous method of using start and stop bits to define the beginning and end of a character. When using synchronous communications, a pre-defined character or sequence of characters is used to let the receiving end know when to start character assembly.



**Figure 11 - Synchronous Communications Bit Diagram**

This pre-defined character is called a sync character or sync flag. Once the sync flag is received, the communications device will start character assembly. Sync characters are typically transmitted while the communications line is idle or immediately before a block of information is transmitted. To illustrate with an example, let's assume that we are communicating using eight bits per character. Point A is receiving a clock from point B and sampling the receive data pin on every upward clock transition. Once point A receives the pre-defined bit pattern (sync flag), the next eight bits are assembled into a valid character. The following eight bits are also assembled into a character. This will repeat until another predefined sequence of bits is received (either another sync flag or a bit combination that signals the end of the text, e.g., EOT). The actual sync flag and protocol varies depending on the sync format (SDLC, BISYNC, etc.).

## Appendix F – ACB Developer Toolkit and ACB Resource Kit

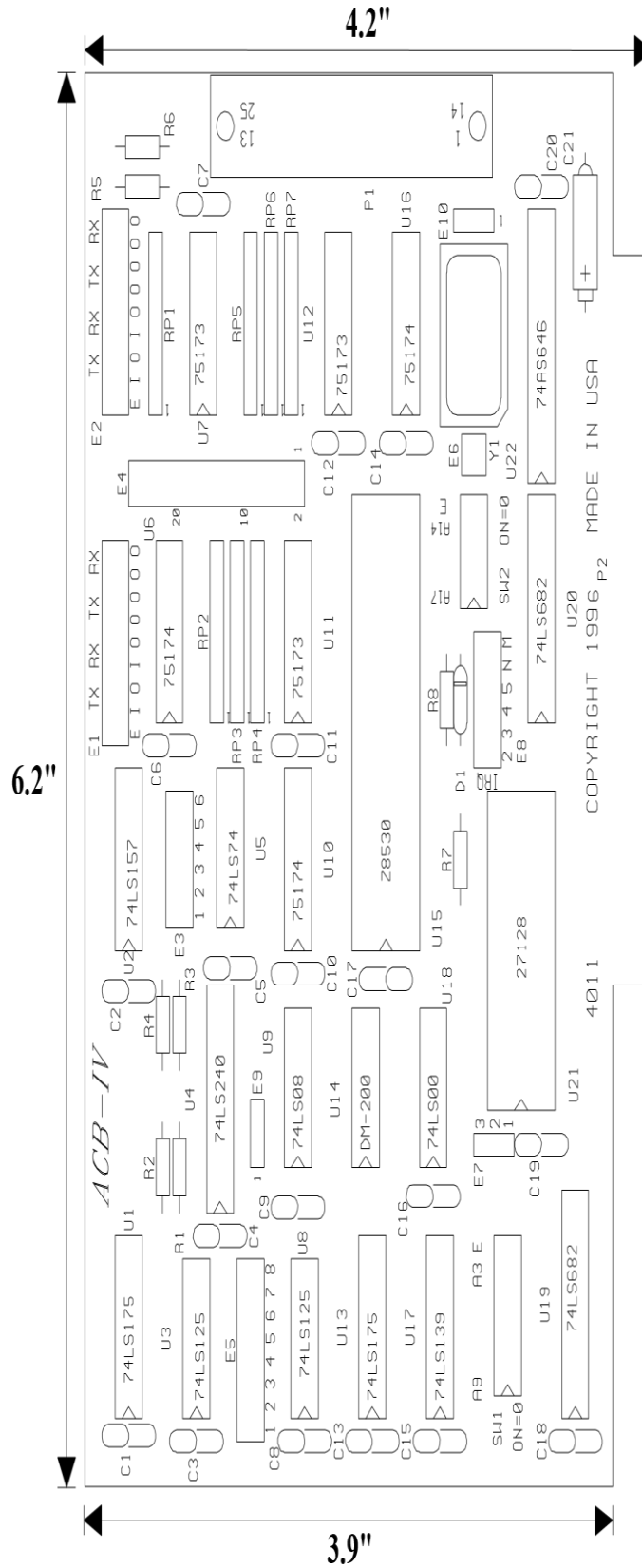
The ACB Developer Toolkit software provides sample software, DOS and Windows Drivers, and technical insight to aid in the development of reliable applications for the ACB family of communication cards. The goal in publishing this collection of source code and technical information is twofold. First, to provide the developer with ample information to develop ACB based applications. Second, to provide a channel for suggestions into the technical support efforts. Topics concerning applications and integration are covered to provide a complete overview of the versatile ACB family.

The ACB Resource Kit provides a brief overview of the ACB product line and is available at your request. For additional information, please contact Sealevel Systems, Inc. Technical Support for assistance:

Available	Monday – Friday, 8:00AM to 5:00PM EST
Phone	864-843-4343
Email	<a href="mailto:support@sealevel.com">support@sealevel.com</a>



# Appendix G – Silk Screen



# Appendix H – Compliance Notices

## Federal Communications Commission (FCC) Statement



This equipment has been tested and found to comply with the limits for Class A digital device, pursuant to Part 15 of the FCC Rules. These limits are designed to provide reasonable protection against harmful interference when the equipment is operated in a commercial environment. This equipment generates, uses, and can radiate radio frequency energy and, if not installed and used in accordance with the instruction manual, may cause harmful interference to radio communications. Operation of this equipment in a residential area is likely to cause harmful interference in such case the user will be required to correct the interference at the user's expense.

## EMC Directive Statement



Products bearing the CE Label fulfill the requirements of the EMC directive (89/336/EEC) and of the low-voltage directive (73/23/EEC) issued by the European Commission. To obey these directives, the following European standards must be met:

- **EN55022 Class A** - "Limits and methods of measurement of radio interference characteristics of information technology equipment"
- **EN55024** – "Information technology equipment Immunity characteristics Limits and methods of measurement".



This is a Class A Product. In a domestic environment, this product may cause radio interference in which case the user may be required to take adequate measures to prevent or correct the interference.



Always use cabling provided with this product if possible. If no cable is provided or if an alternate cable is required, use high quality shielded cabling to maintain compliance with FCC/EMC directives.

# Warranty

Sealevel's commitment to providing the best I/O solutions is reflected in the Lifetime Warranty that is standard on all Sealevel manufactured I/O products. We are able to offer this warranty due to our control of manufacturing quality and the historically high reliability of our products in the field. Sealevel products are designed and manufactured at its Liberty, South Carolina facility, allowing direct control over product development, production, burn-in and testing. Sealevel achieved ISO-9001:2015 certification in 2018.

## Warranty Policy

Sealevel Systems, Inc. (hereafter "Sealevel") warrants that the Product shall conform to and perform in accordance with published technical specifications and shall be free of defects in materials and workmanship for the warranty period. In the event of failure, Sealevel will repair or replace the product at Sealevel's sole discretion. Failures resulting from misapplication or misuse of the Product, failure to adhere to any specifications or instructions, or failure resulting from neglect, abuse, accidents, or acts of nature are not covered under this warranty.

Warranty service may be obtained by delivering the Product to Sealevel and providing proof of purchase. Customer agrees to ensure the Product or assume the risk of loss or damage in transit, to prepay shipping charges to Sealevel, and to use the original shipping container or equivalent. Warranty is valid only for original purchaser and is not transferable.

This warranty applies to Sealevel manufactured Product. Product purchased through Sealevel but manufactured by a third party will retain the original manufacturer's warranty.

## Non-Warranty Repair/Retest

Products returned due to damage or misuse and Products retested with no problem found are subject to repair/retest charges. A purchase order or credit card number and authorization must be provided in order to obtain an RMA (Return Merchandise Authorization) number prior to returning Product.

## How to obtain an RMA (Return Merchandise Authorization)

If you need to return a product for warranty or non-warranty repair, you must first obtain an RMA number. Please contact Sealevel Systems, Inc. Technical Support for assistance:

Available	Monday – Friday, 8:00AM to 5:00PM EST
Phone	864-843-4343
Email	<a href="mailto:support@sealevel.com">support@sealevel.com</a>

## Trademarks

Sealevel Systems, Incorporated acknowledges that all trademarks referenced in this manual are the service mark, trademark, or registered trademark of the respective company.